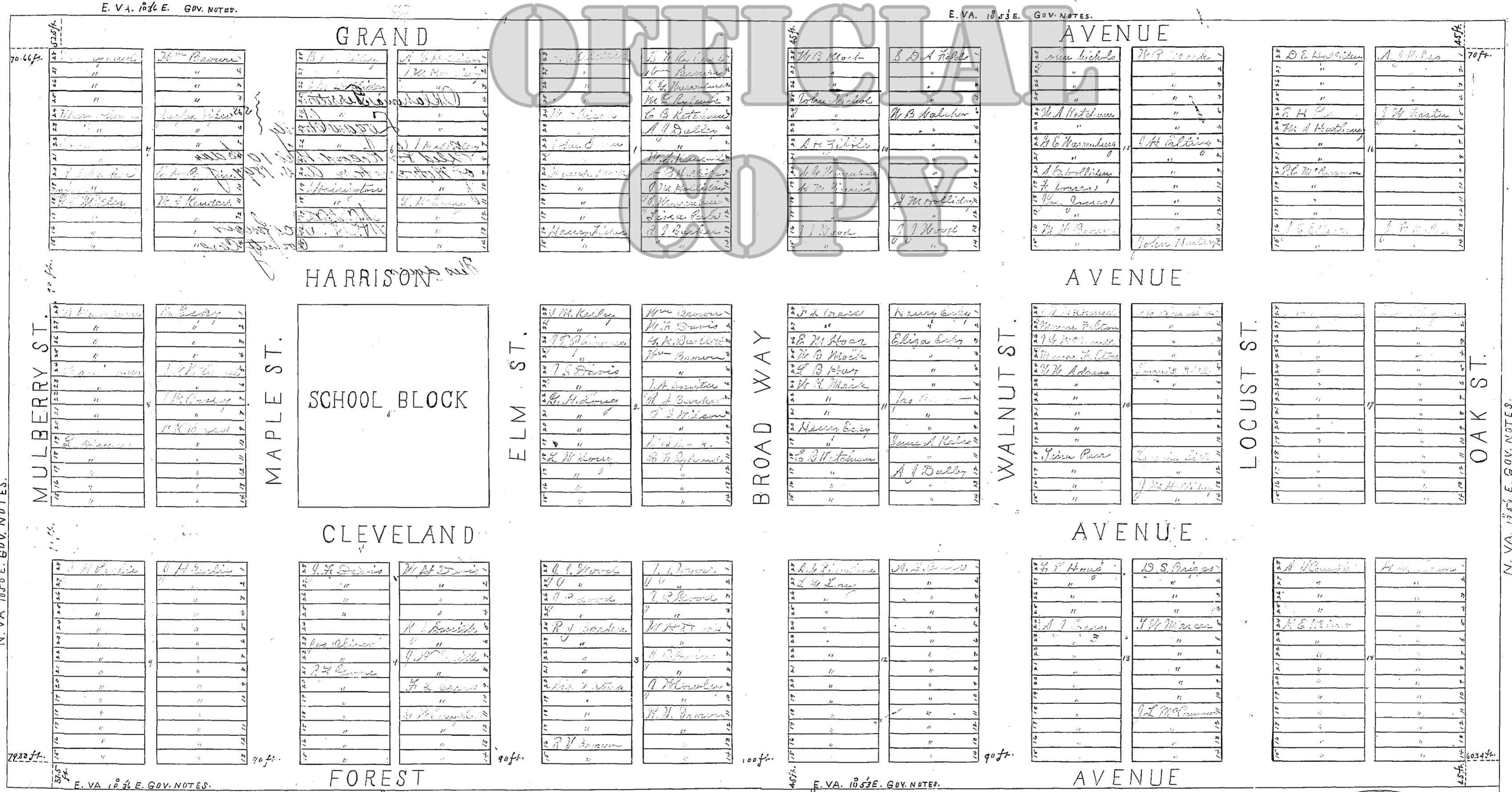


CRESCENT CITY, O.T.



SURVEY: PT. OF BEGINNING, COR. SECS. 11, 12, 13 & 14 T. 17 N. R. 4 W. I.M. SET IRON BAR 1 x 1 1/4 x 1 1/8 IN. IN COR; FROM WHENCE S. 10 5/8 E. GOV. NOTES 132.0 FT. SET POST IN SEC. LINE, FROM WHICHE 10 5/8 VA. E. GOV. NOTES 9 FT. SET WAGON SPINDLE PT. DIAMETER 1 1/2 IN. BY 18 IN. IN LENGTH. THIS WITH PT. OF BEGINNING ARE THE TERMINI OF THE BASE LINE WITH WHICH ALL INTERIOR N. & S. L. ARE PARALLEL. ALL E. & W. LINES ARE PARALLEL WITH SEC. LINE BET. SECS. 12 & 13.

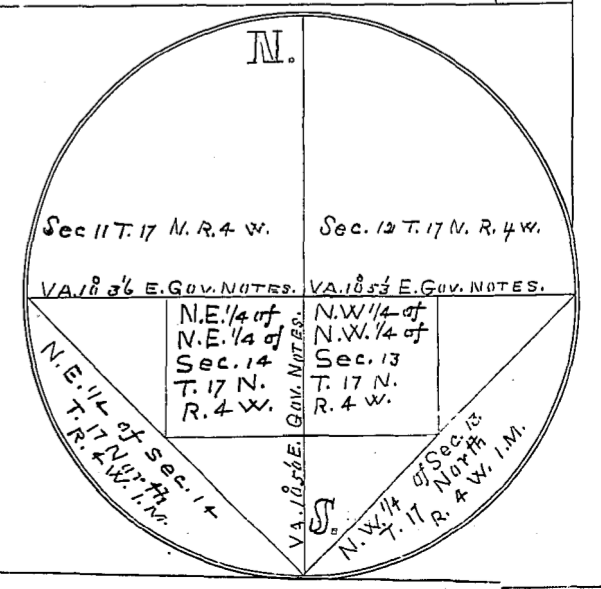
I HEREBY CERTIFY THAT THE FOREGOING IS A CORRECT PLAT OF CRESCENT CITY LOGAN COUNTY O.K. TERRITORY AS SURVEYED AND PLATTED BY ME FOR TOWNSITE BOARD No. 6 O.T.

R. J. BARKER, S. & C.E.

WE HEREBY CERTIFY THAT WE ADOPT THE FOREGOING AS THE OFFICIAL PLAT AND SURVEY OF CRESCENT CITY LOGAN COUNTY O.T.

John Foster
William S. Robertson } TOWNSITE BOARD No. 6 O.T.
Andrew G. Edrall

Scale 100 ft. = 1 in.



View additional land records at
OKCountyRecords.com